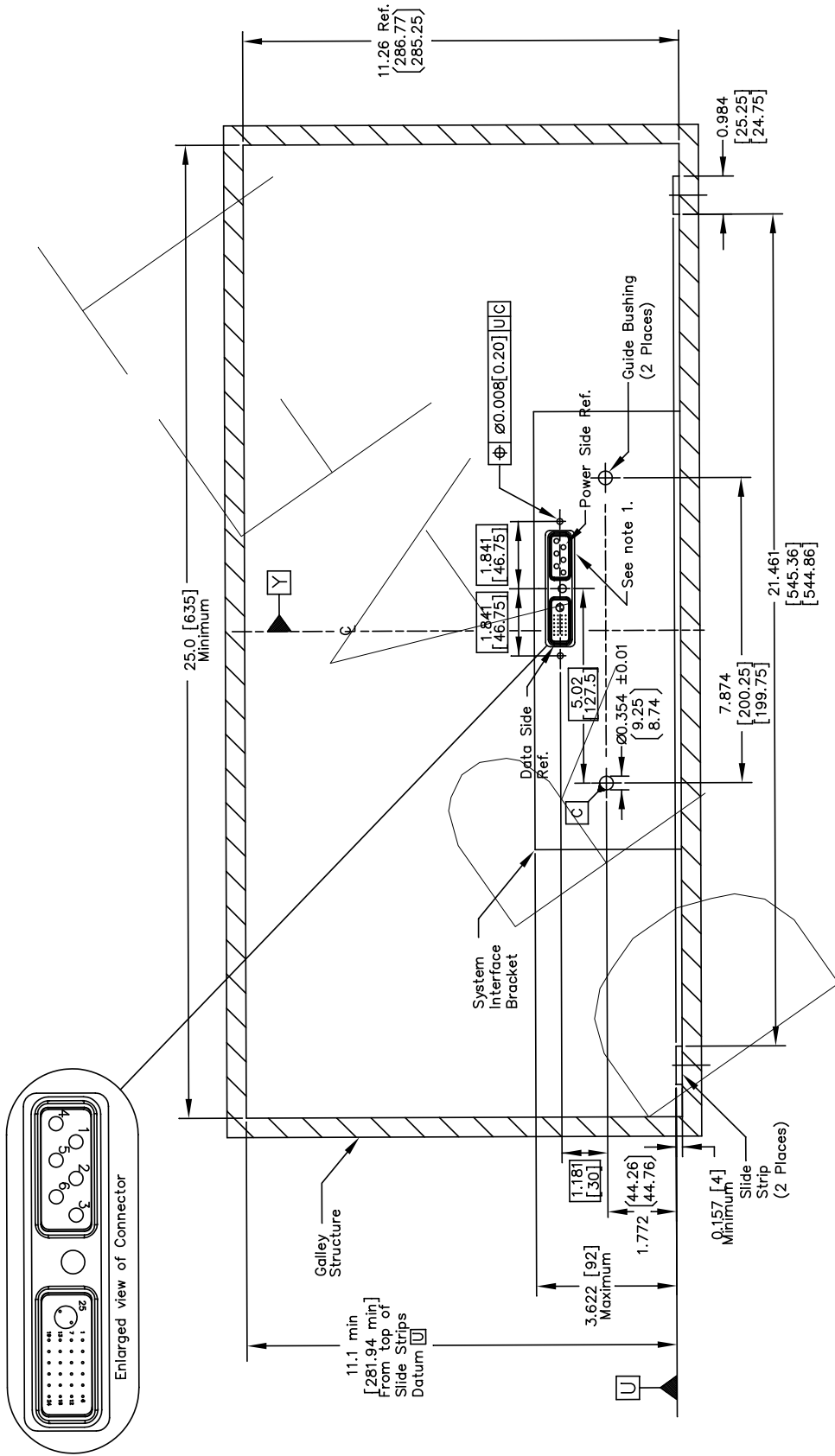
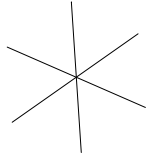


2.1.8 GAIN Size 6

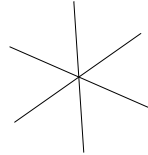
The GAIN standard dimension drawings for the Size 6 Structural and Systems Interface are shown in Figures 2-21A through 2-23C.

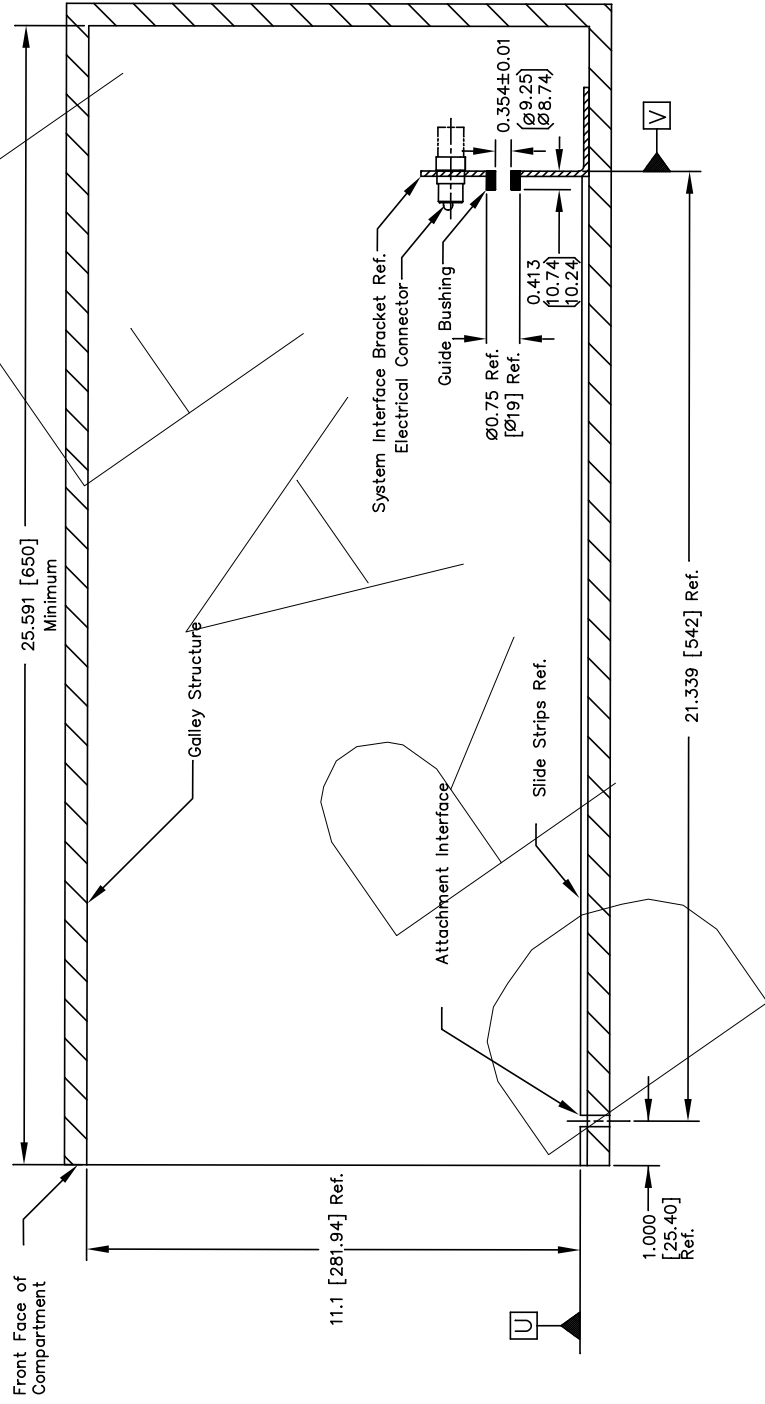
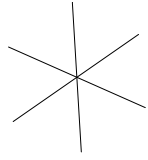


Note:
1. See Figure 3.4 for panel cut-out dimensions

Figure 2-21A - GAIN Size 6 Compartment Structural and Systems Interface Drawing
Front View

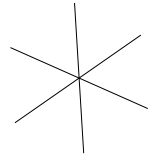
Inches [mm]

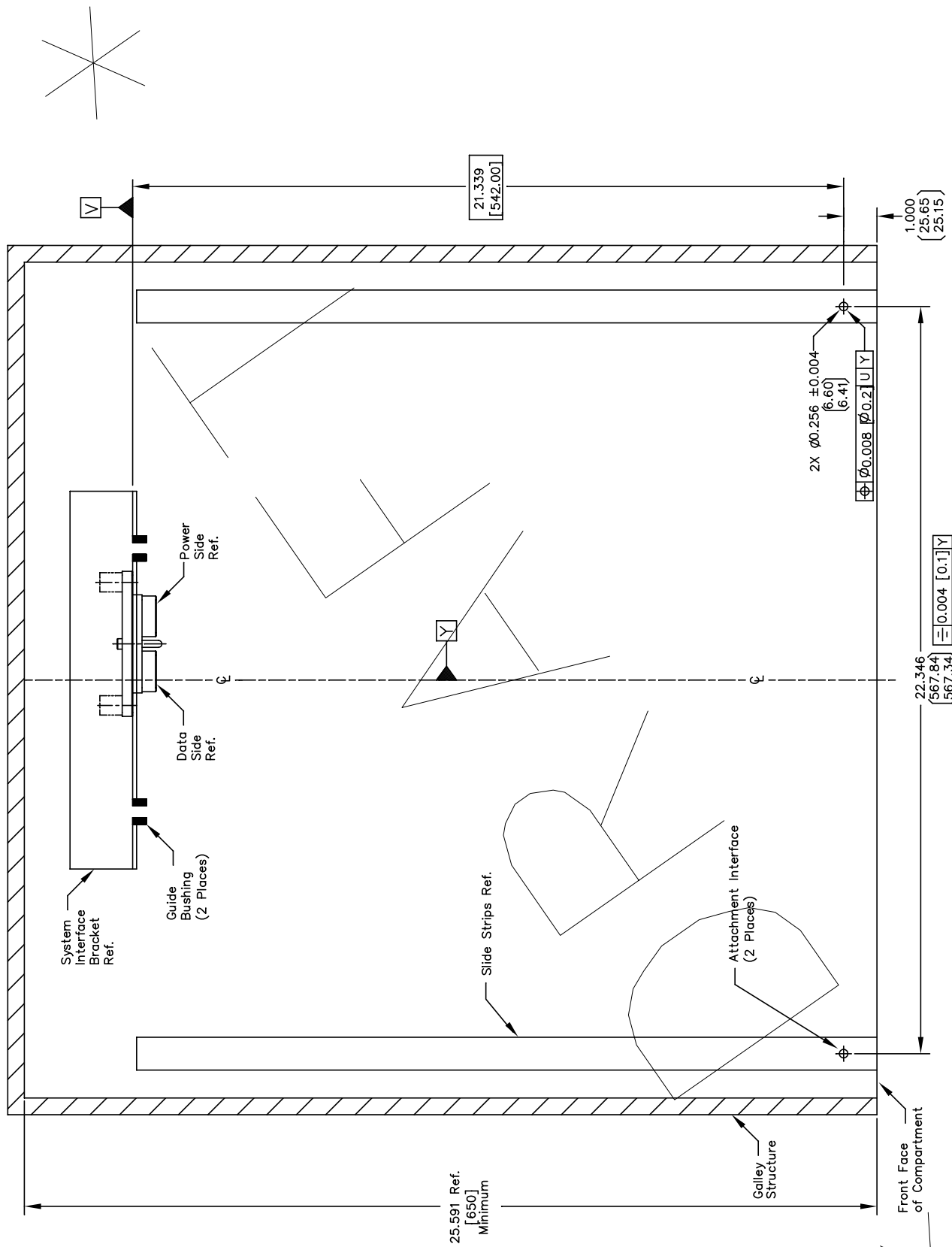




Inches [mm]

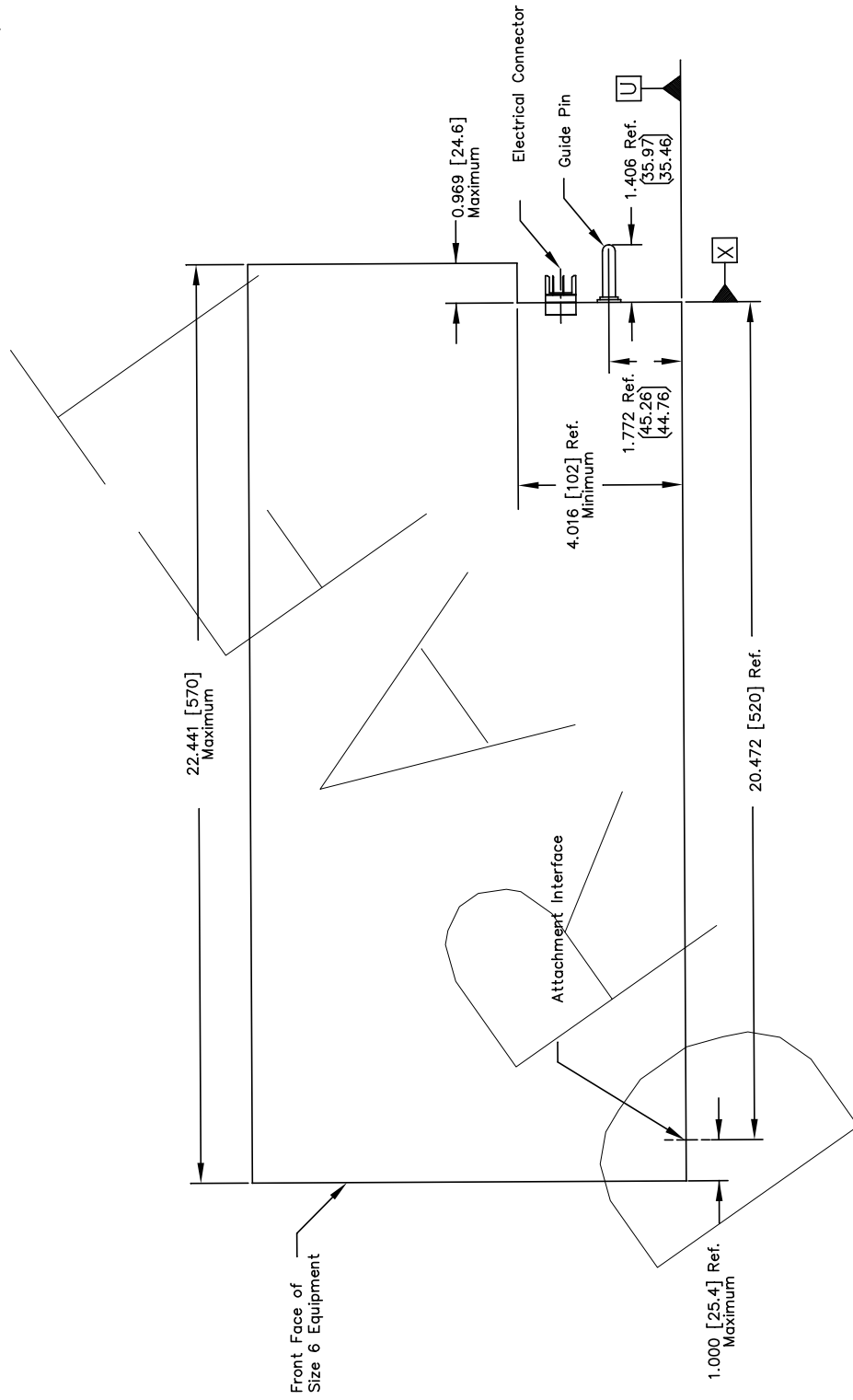
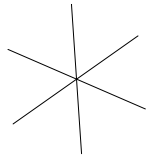
Figure 2-21B - GAIN Size 6 Compartment Structural and Systems Interface Drawing
Side View





Inches [mm]

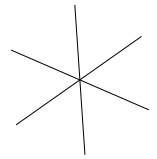
Figure 2-21C - GAIN Size 6 Compartment Structural and Systems Interface Drawing
Top View

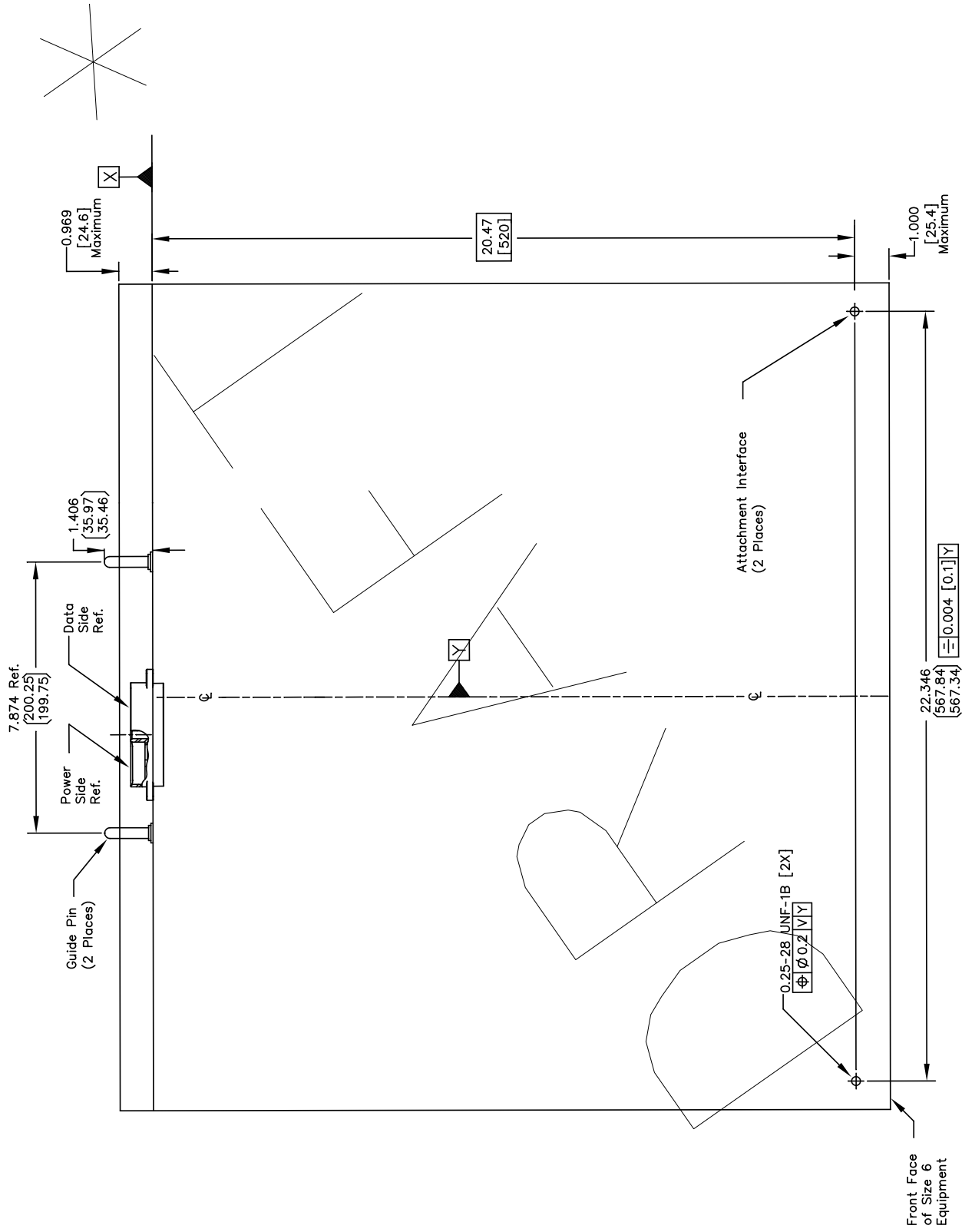


Front Face of
Size 6 Equipment

Inches [mm]

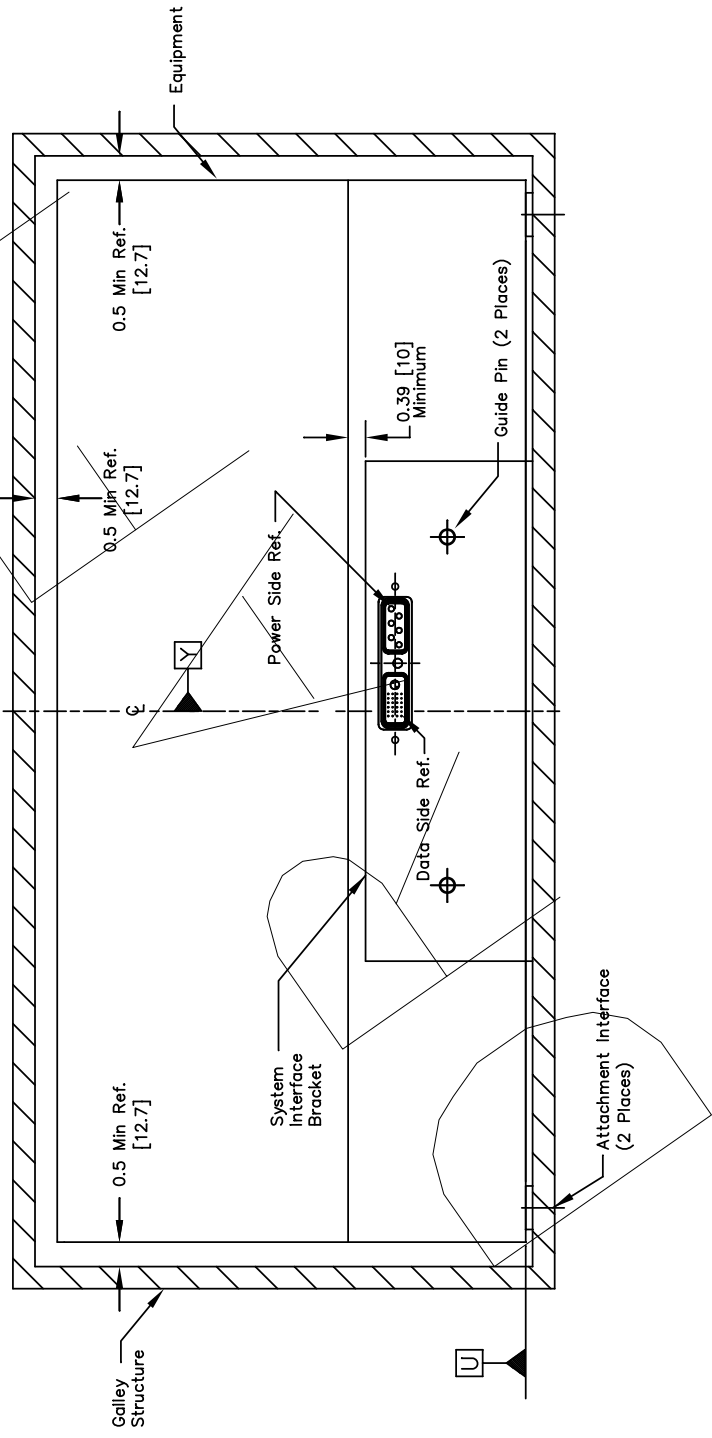
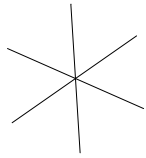
Figure 2-22B - GAIN Size 6 Equipment Standard Dimensions Drawing
Side View





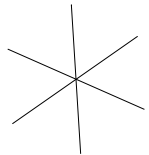
Inches [mm]

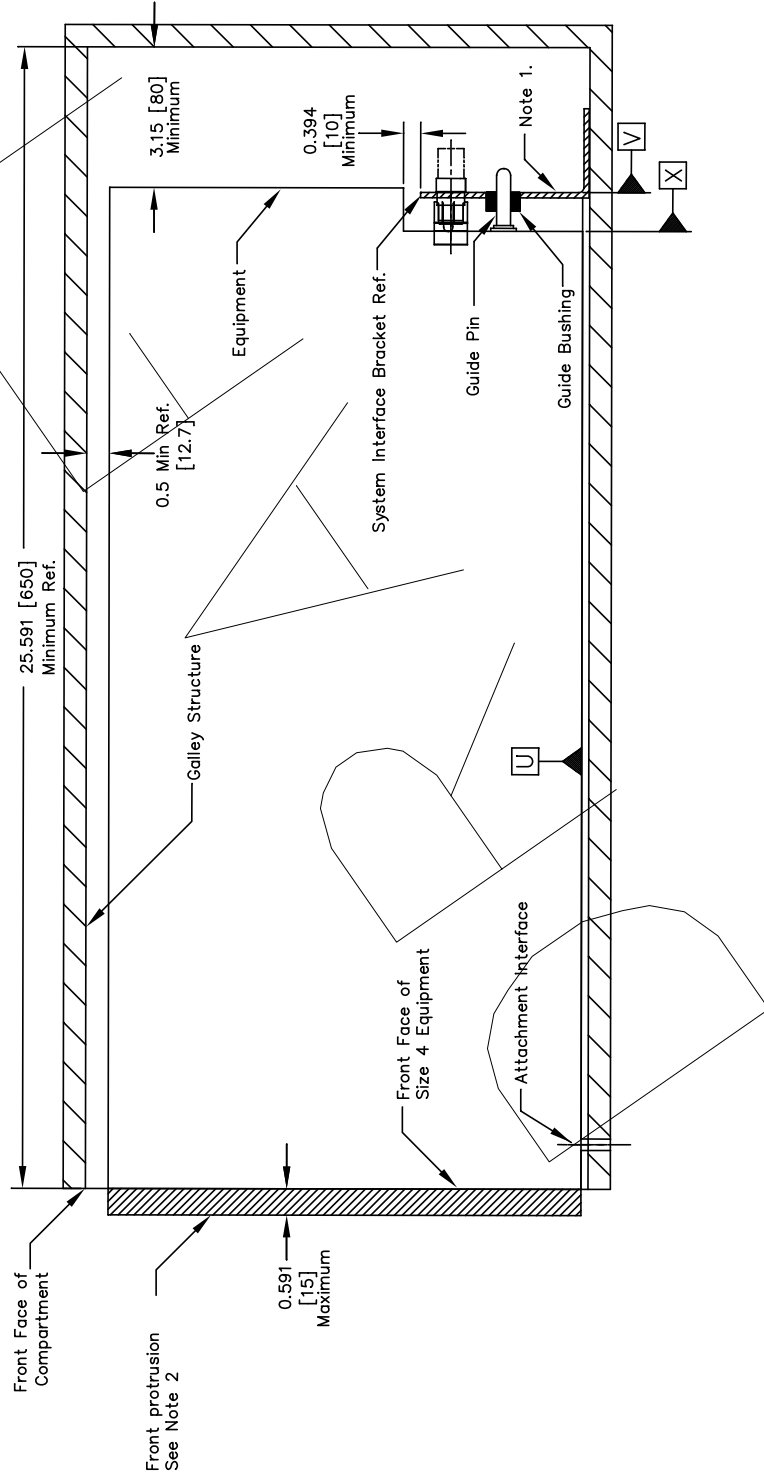
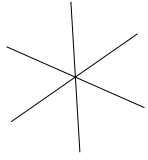
Figure 2-22C - GAIN Size 6 Equipment Standard Dimensions Drawing
Bottom View



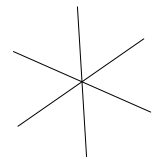
Inches [mm]

Figure 2-23A - GAIN Size 6 Compartment and Equipment installation details
Front View





- Notes:
1. The maximum allowable distance for fixing materials, bend radius, and chamfer designs should not exceed 1.9 [48.26] max.
 2. Equipment should be installed flush with the front of the compartments along (A-A); however, a max. 0.951 [15] from protrusion is allowed for curved surfaces (see Appendix C for additional information).



Inches [mm]

Figure 2-23B - GAIN Size 6 Compartment and Equipment installation details
Side View

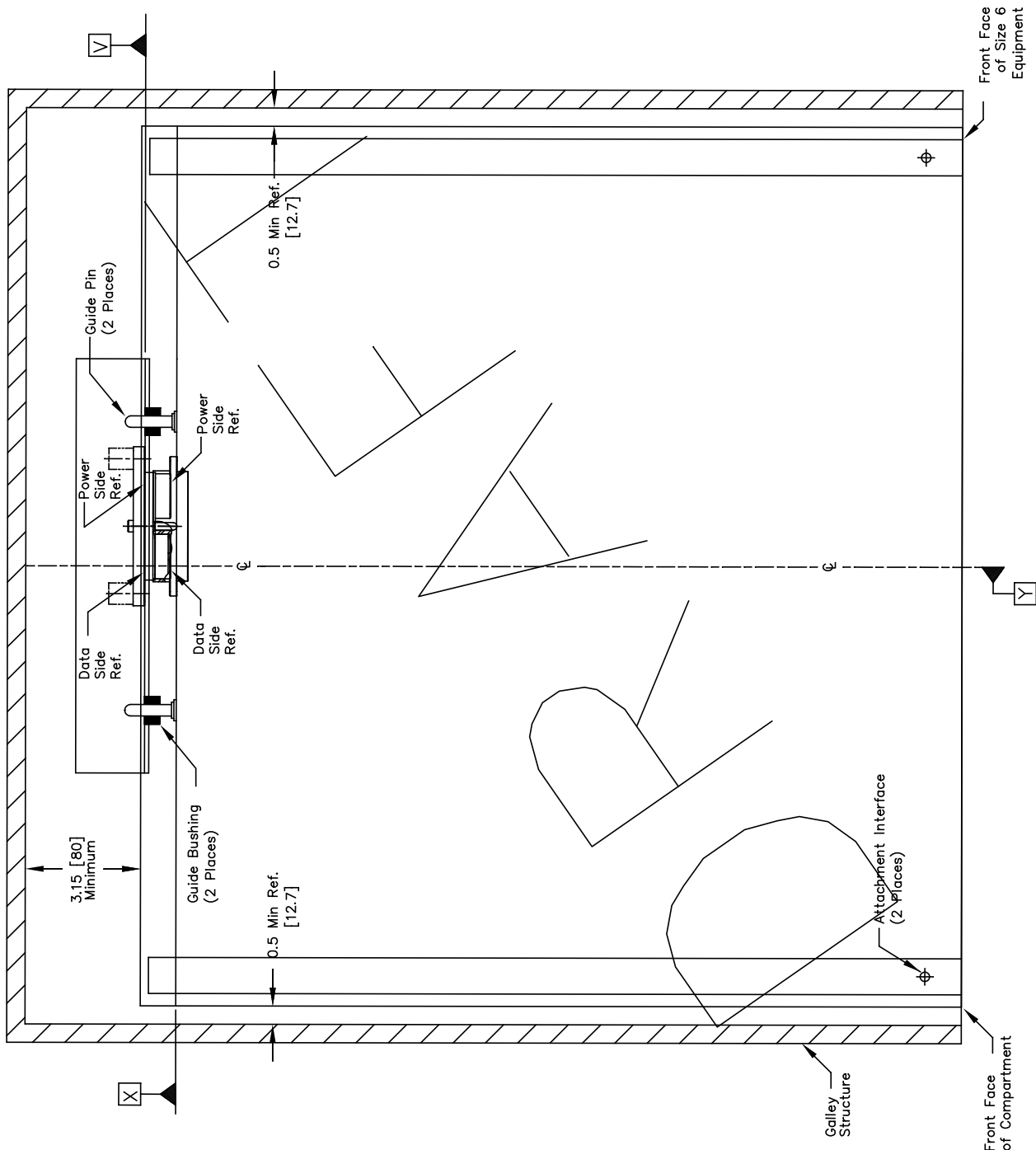


Figure 2-23C - GAIN Size 6 Compartment and Equipment installation details
Plan View