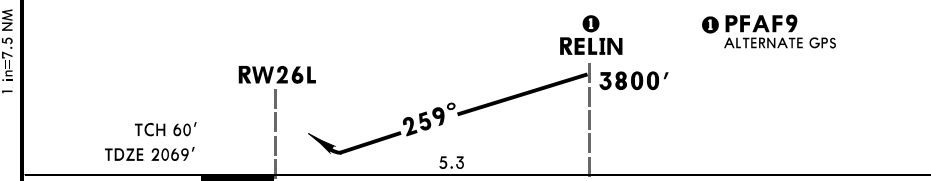
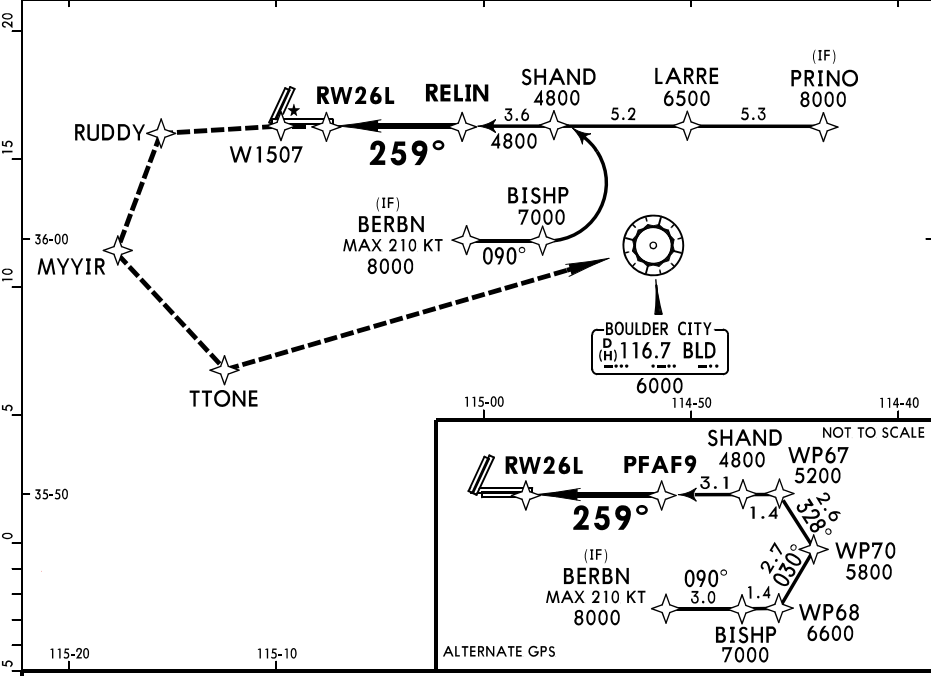


BRIEFING STRIP™	D-ATIS	LAS VEGAS Approach (R)		LAS VEGAS Tower		Ground	
	132.4	West 125.025	East 125.6	Rwys 1 L/R, 19 L/R	Rwys 8 L/R, 26 L/R	West of Rwy 1R/19L	East of Rwy 1R/19L
RNAV	Final Apch Crs 259°	GS RELIN 3800' (1731')		DA(H) XXX' (XXX')	Apt Elev 2181' TDZE 26L 2069'		
MISSED APCH:							XXXX
Alt Set: INCHES		Trans level: FL 180			Trans alt: 18000'		
MSA XXX							



Gnd speed-Kts	70	90	100	120	140	160	MALSF PAPI
GS	3.00°	372	478	531	637	849	
MAP at DA							

TERPS STRAIGHT-IN LANDING RWY 26L
DA(H) **XXXX'** (XXX')

A	
B	
C	
D	